



Guangzhou YuBen Hydraulic Technology Co., Ltd

Add: A5 Factory, Lanyuan Industrial Zone, No. 8 Xinwu Sixth Street,
Zhaidong Village, Yongning Street, Zengcheng District, Guangzhou



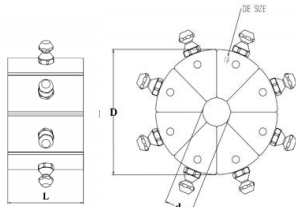
- CONTROL**
- ※Semi-Automatic
 - ※Automatic
 - ※CNC

TECHNICAL DATA	
Max crimping dia (mm)	6-140
Max crimping dia (inches)	0.24-5.51
Max. crimping force (kN)	3200
Max. crimping force (tonnage)	320
Cycle time 10 mm (s)	1.5
Hose size ID (inches) Hydraulic/Industrial	2 1/2" (4SH) / 4"
Dies set series	P32 & P140
Max. opening (mm)	+82
Max. opening without dies (mm)	222
Master die D / L (mm)	140/97
Master die D / L (inches)	5.51/3.82
Motor Power (kW/HP)	7.5 / 10.5
Oil tank volume (L)	120
Crimping /hour	2400
Motor Voltage (V): Tri	200/220/380/400/440

DIMENSIONS (L x W x H)	
Machine (mm)	1050X810X1800
Machine (inch)	41.3X31.9X70.9
Package (mm)	1105X945X1890
Package (inch)	43.5X37.2X74.4
Station (mm)	870X650X1060
Station (inch)	34.3X25.6X41.7
Package (mm)	955X725X1340
Package (inch)	37.6X28.5X52.8

- STANDARD FEATURES**
- ※QuickChange-tool
 - ※Mirror
 - ※Electric backstop device
 - ※Die racks
 - ※Foot pedal**

(**with Automatic continuous crimping function)



WEIGHT (KG)

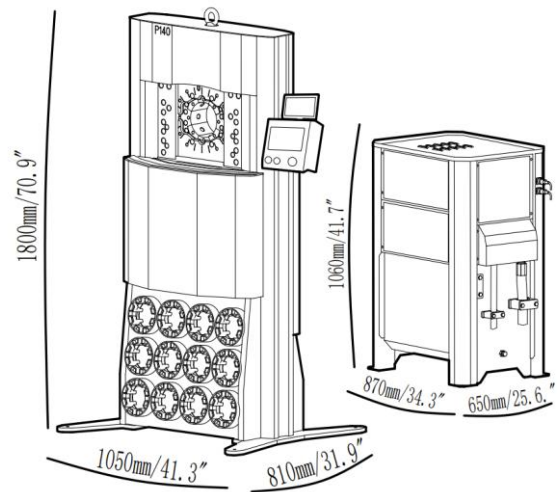
Machine N. W.	980
Machine G. W.	1035
Station N. W.	250
Station G. W.	300

YB-P140 FEATURES

Yuben P140 hose-crimping machine has been designed to crimp up to 2 1/2" 4-spiral hoses or 4 inch industrial pipe. Max opening 222mm. P140 die system with adaptor dies suitable for larger, medium and even small size fittings.

CNC SYSTEM FEATURES

- ※Setup Max. opening
- ※Correction / Offset
- ※Pressure maintaining time delay function
- ※Speed change
- ※Quality report
- ※Pressure control
- ※Step crimping
- ※Save crimping data
- ※Counting
- ※Setup special die



P32Dies:

DieSetNo	Crimping range ID (mm)	L (mm)
P32/06*	6.0 - 8.0	55
P32/08*	8.0 - 10.0	55
P32/10*	10.0 - 12.0	55
P32/12*	12.0 - 14.0	55
P32/14	14.0 - 16.0	55
P32/16	16.0 - 19.0	55
P32/19	19.0 - 22.0	55
P32/22	22.0 - 26.0	70
P32/26	26.0 - 30.0	70
P32/30	30.0 - 34.0	70
P32/34	34.0 - 39.0	75
P32/39	39.0 - 45.0	75
P32/45	45.0 - 51.0	90
P32/51	51.0 - 57.0	90
P32/57	57.0 - 63.0	100
P32/63	63.0 - 69.0	100
P32/69	69.0 - 75.0	100
P32/74*	74.0 - 80.0	100
P32/78*	78.0 - 87.0	100

Pno.	Crimping range D	L
P140/84*	84.0 - 92.0	110
P140/92*	92.0 - 100.0	110
P140/100*	100.0 - 108.0	110
P140/108*	108.0 - 116.0	110
P140/116*	116.0 - 124.0	110
P140/124*	124.0 - 132.0	110
P140/132*	132.0 - 140.0	110

*: Non standard die
With adapter dies