



Guangzhou YuBen Hydraulic Technology Co., Ltd

Add: A5 Factory, Lanyuan Industrial Zone, No. 8 Xinwu Sixth Street,
Zhaidong Village, Yongning Street, Zengcheng District, Guangzhou



YB120L FEATURES



Suitable for small batch production, high efficiency, high stability. Up to 2 inch (R13) or 3 inch 2 sp hose. Save operator's strength by compact ergonomic design make .



CNC SYSTEM FEATURES

- ✳ Setup Max. opening
- ✳ Correction / Offset
- ✳ Pressure maintaining time delay function
- ✳ Speed change
- ✳ Quality report
- ✳ Pressure control
- ✳ Step crimping
- ✳ Save crimping data
- ✳ Counting
- ✳ Setup special die

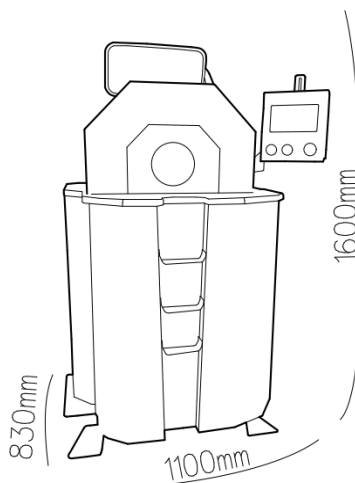
CONTROL

- ✳ Semi-Automatic
- ✳ Automatic
- ✳ CNC

STANDARD FEATURES

- ✳ QuickChange-tool
- ✳ Mirror
- ✳ Electric backstop device
- ✳ Die racks
- ✳ Foot pedal **

(** with Automatic continuous crimping function)



TECHNICAL DATA

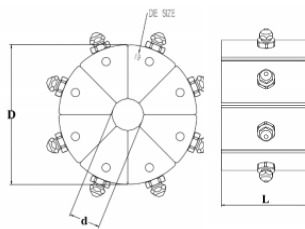
Max crimping dia (mm)	118
Max crimping dia (inches)	4.65
Max. crimping force (kN)	2450
Max. crimping force (tonnage)	245
Cycle time 10 mm (s)	1.8
Hose size ID (inches)	2" (R13)
Dies set series	P20 & YB120L
Max. opening (mm)	+52
Max. opening without dies (mm)	170
Master die D / L (mm)	118/97
Master die D / L (inches)	4.65/3.82
Motor Power (kW/HP)	4/5.44
Oil tank volume (L)	70
Motor Voltage (V): Tri	200/220/380/400/440

DIMENSIONS (L x W x H)

Machine (mm)	1100X830X1600
Machine (inch)	43.3X32.7X63.0
Package (mm)	1025X1025X1740
Package (inch)	40.4X40.4X68.5

WEIGHT (KG)

N.W.	790
G.W.	840



P20 Dies:

DieSetNo	Crimping range ID (mm)	L (mm)
P20/06*	6.0 - 8.0	6
P20/08*	8.0 - 10.0	8
P20/10*	10.0 - 12.0	10
P20/12*	12.0 - 14.0	12
P20/14	14.0 - 16.0	14
P20/16	16.0 - 19.0	16
P20/19	19.0 - 23.0	19
P20/23	23.0 - 27.0	23
P20/27	27.0 - 31.0	27
P20/31	31.0 - 36.0	31
P20/36	36.0 - 41.0	36
P20/41	41.0 - 47.0	41
P20/47	47.0 - 52.0	47

DieSetNo	Crimping range ID (mm)	L (mm)
YB120L/52	52.0 - 57.0	52
YB120L/57	57.0 - 63.0	57
YB120L/63	63.0 - 69.0	63
YB120L/69	69.0 - 74.0	69
YB120L/74*	74.0 - 79.0	74
YB120L/79*	79.0 - 84.0	79
YB120L/84*	84.0 - 92.0	84
YB120L/92*	92.0 - 100.0	92
YB120L/100*	100.0 - 110.0	100

*: Non standard die

With adapter dies